

054316

RECEIVED
LARAMIE COUNTY
CHEYENNE, WY.

'89 FEB 17 AM 10 26

CERTIFIED LAND CORNER RECORDATION

DESCRIPTION OF CORNER EVIDENCE FOUND, AND ORIGINAL RECORD (if known)

S.29 S.28
S.32 S.33
T.17N., R.67W.
6th P.M.

Found no evidence of previous monumentation.

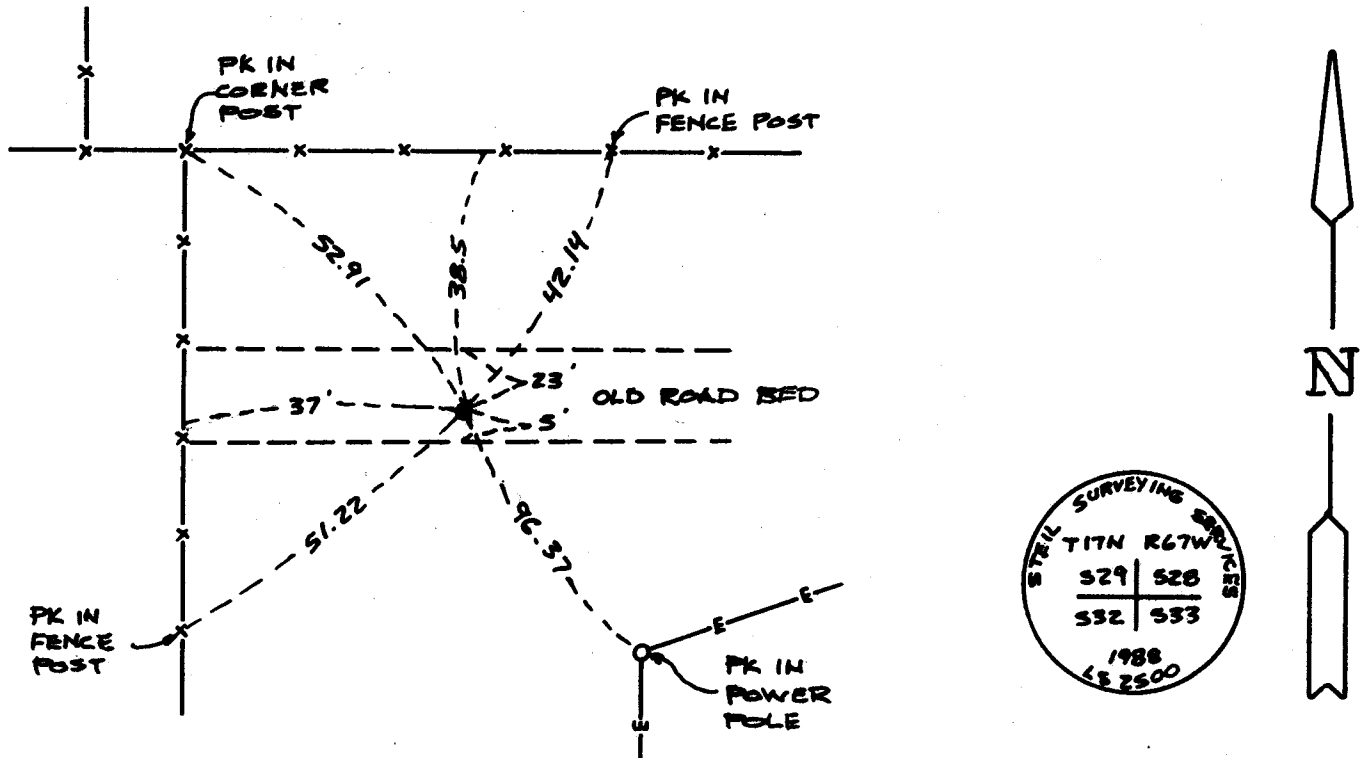
G.L.O. Record: Limestone 16"x14"x14" set by Alfred M. Rogers, October 19, 1872.

DESCRIPTION OF MONUMENT AND ACCESSORIES ESTABLISHED TO PERPETUATE THE ORIGINAL LOCATION OF THIS CORNER:

At the corner: Set 3"x30" long Aluminum Pipe with 3 1/2" Aluminum Cap projecting 0.5' above ground encircled by a collar of stone, set from Highway R/W plans 1927, project No.175 A and stamped as shown below.

Accessories : See ties below.

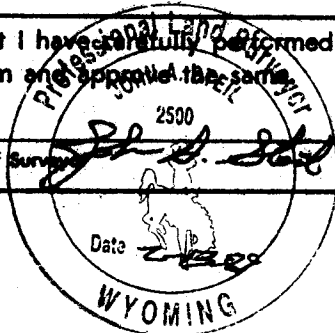
SKETCH, WITH COURSE AND DISTANCE TO ADJACENT CORNER IF DETERMINED IN THIS SURVEY. (May Sketch or Paste Reproduction on Reverse Side.)



I, John A. Steil certify that I have carefully performed or reviewed the work done on the diagrammed corner as reported on this recordation form and approve the same.

Signature of Surveyor John A. Steil L.S. 2500
Registration No.

STATE OF WYOMING,
Office of Clerk and Recorder,
County of _____



This "corner record" was filed for record on the _____ day of _____, 19____, was noted on the cross-index plat and is assigned page No. _____, in book No. _____.

Joseph C. Whitehead
County Official

Cross Index No. <u>49</u>	T. <u>17N</u>	R. <u>67W</u>	Mer. <u>6th</u>
_____	T. _____	R. _____	Mer. _____
_____	T. _____	R. _____	Mer. _____
_____	T. _____	R. _____	Mer. _____
_____	T. _____	R. _____	Mer. _____
_____	T. _____	R. _____	Mer. _____
_____	T. _____	R. _____	Mer. _____